



Pinal County Comprehensive Plan

Board of Supervisors Update

February 6, 2008



A Comprehensive Plan is...

- An expression of the long term vision
- A legal requirement by the state
- A way to identify desired land uses and locations
- A policy document that guides growth and development
- Not a zoning ordinance
- The basis for all other planning

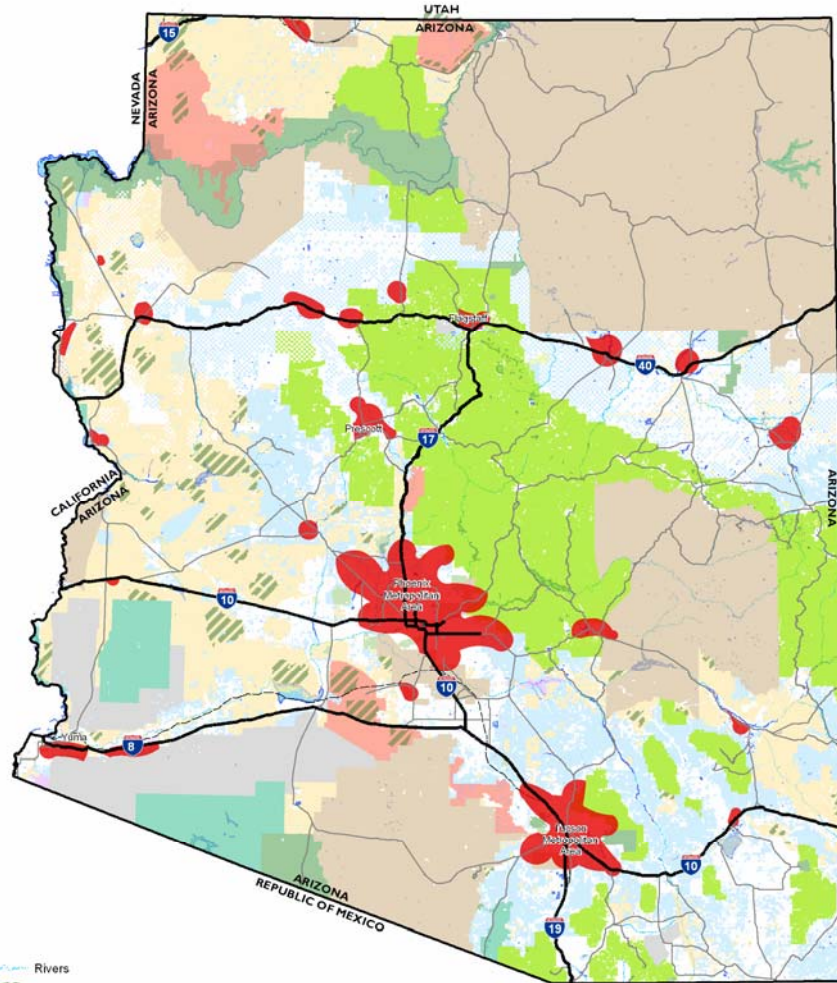


New Plan Elements

- Open Space Acquisition and Preservation
- Growth Areas
- Environmental Planning
- Cost of Development
- Economic Development

Pinal County Comprehensive Plan

We Create Our Future



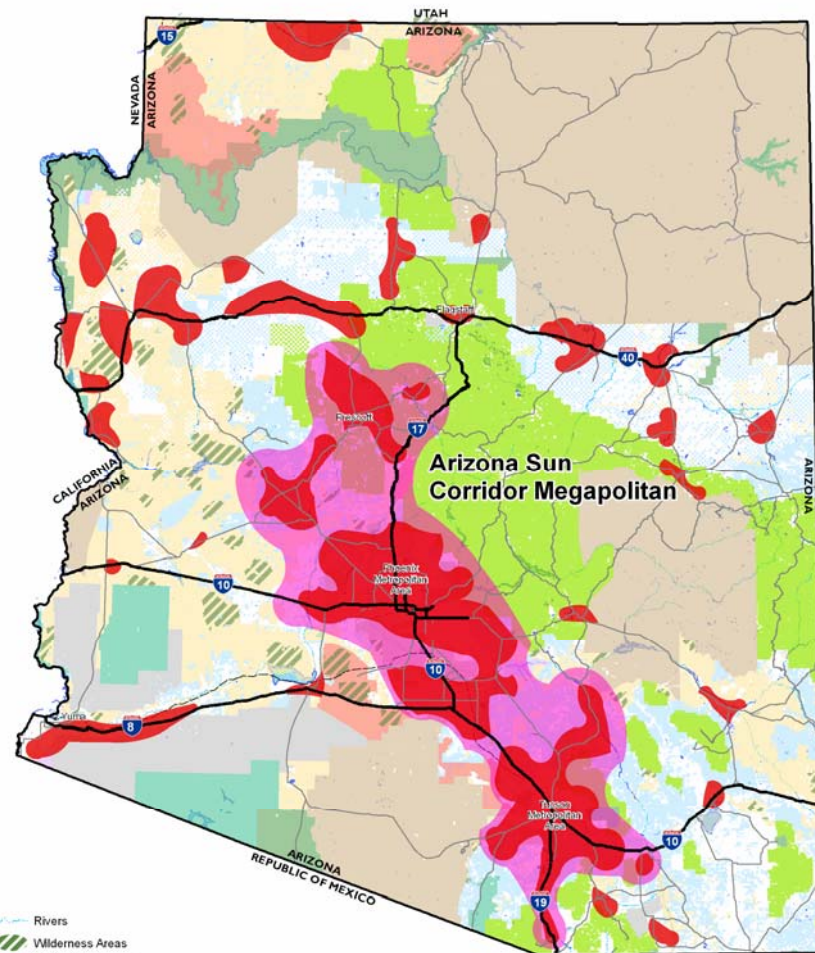
- | | |
|-------------------------------|------------------------------|
| Rivers | National Park Service |
| Wilderness Areas | Private |
| National Monuments | State Land |
| Population/Employment Centers | State Wildlife Area |
| Land Ownership | US Forest Service |
| Bureau of Land Management | US Fish and Wildlife Service |
| Indian Communities | |
| Local or State Parks | |
| Military | |

2005 Population/ Employment Centers

Source: Maricopa Association of Governments,
Long Range Transportation Plan 2050

Pinal County Comprehensive Plan

We Create Our Future



- | | |
|----------------------------------|------------------------------|
| Rivers | National Park Service |
| Wilderness Areas | Private |
| National Monuments | State Land |
| Population/Employment Centers | State Wildlife Area |
| Arizona Sun Corridor Megapolitan | US Forest Service |
| Land Ownership | US Fish and Wildlife Service |
| Bureau of Land Management | |
| Indian Communities | |
| Local or State Parks | |
| Military | |

2050 Population/ Employment Centers

Source: Maricopa Association of Governments,
Long Range Transportation Plan 2050



Where are we in the process?

Task 1: Project Initiation

Task 2: Framing Pinal County Comprehensive Plan Issues

Task 3: Pinal County Comprehensive Plan Compendium

Task 4: Setting the Vision

Task 5: Policy Framework

Task 6: Alternatives Development and Analysis

Task 7: Preferred Plan Alternative

Task 8: Draft Comprehensive Plan (60-Day Review Draft)

Task 9: Agency Review

Task 10: Implementation Plan

Task 11: Public Hearing Comprehensive Plan

Task 12: Produce Final Pinal County Comprehensive Plan



Planning Process Input Structure

- Comprehensive Plan Advisory Group
- Technical Advisory Group
- Regional Planning Team
- Economic Development Task Force
- Transportation Task Force
- Stakeholder Organizations
- Public (Road Shows, Visioning Workshops and Design Charrettes; Youth Charrettes; online input)

How did we get here?

- Data Collection and Analysis – Compendium
- Road Shows Held July 2007
- Visioning Workshops Held August 2007
- Development of Draft Vision
- Initial Policy Development
- Design Charrettes Held October 2007
- Youth Charrettes Held in December 2007

Over 1,000 participants to date!

Youth Charrettes

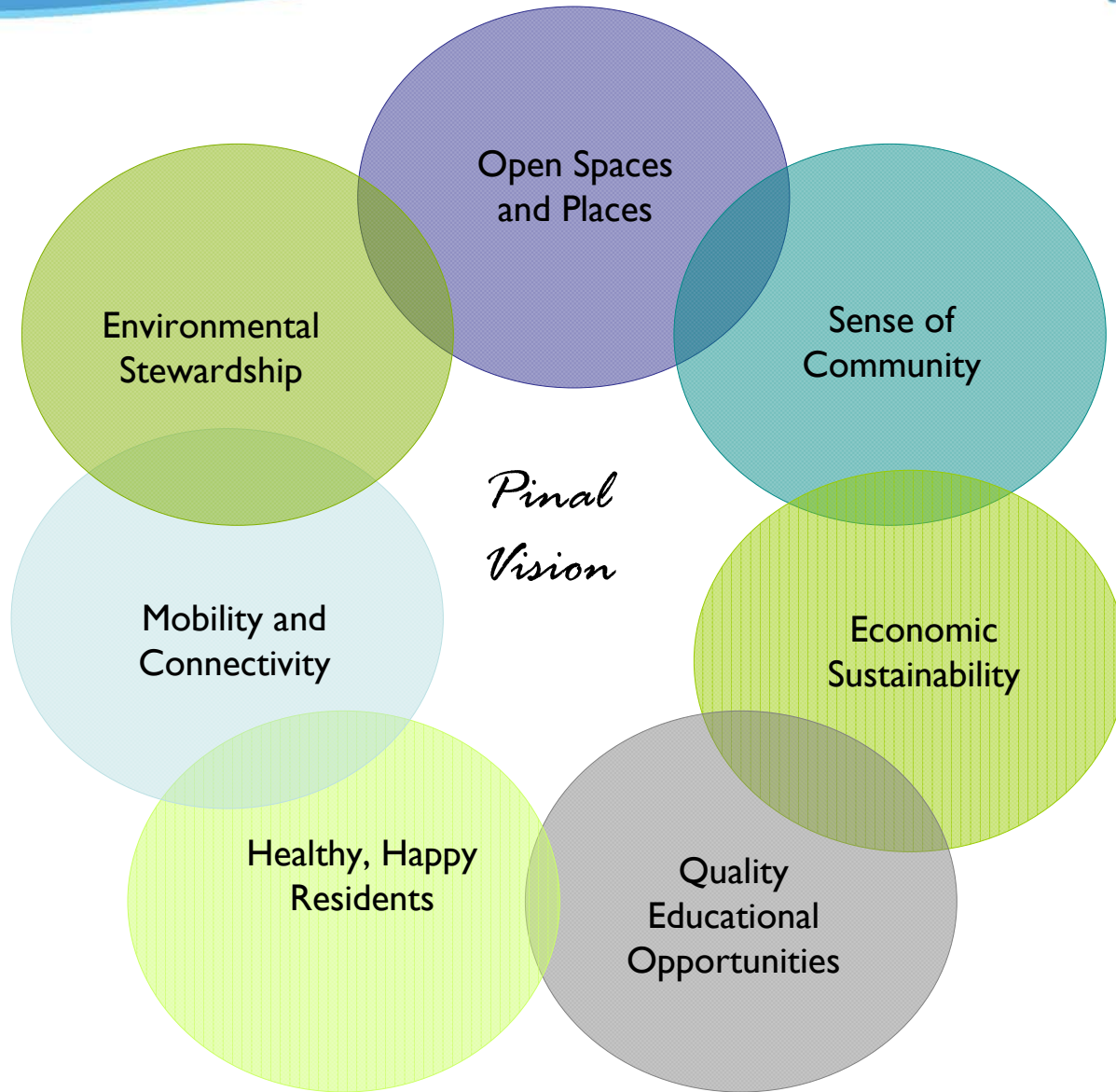
Eight Charrettes held, over 200 students participated





Youth Charrettes

- Open spaces, heritage and history important
- Quality educational programming and opportunities desired
- Creating job opportunities within Pinal important
- Need to provide more recreational opportunities for youth
- Protection of Pinal's 'wild' spaces valued
- Pinal needs to bolster cultural opportunities, including museums and zoos, and use its outdoor spaces for economic gain





Goals

- Anticipate and address issues
- Create consensus on land use
- Environmental sustainability
- Open space preservation
- Link development with transportation
- Develop employment areas
- Create population centers
- Improve our quality of life!

Land Use Alternatives

- Each alternative considers the same population
- Alternatives differ based on application of:
 - Economic and residential development
 - Open space
 - Transportation

Land Use Alternatives

Approach #1

Trends

- Assumes current residential development pattern
- Assumes maintaining current jobs to population ratio
- Focuses on illustrating what may occur without change in philosophy

Land Use Alternatives

Approach #2 Corridor Focused

- Concentrates larger mixed use economic, residential development activities in western part of county
- Focuses on major transportation routes (such as I-10, I-8 and the proposed North/South freeway corridor)
- Maintains rural character of eastern county
- Applies the recently adopted Pinal County Open Space and Trails Master Plan.

Land Use Alternatives

Approach #3 Dispersed Growth

- Distributes economic/residential development activities throughout the County
- Growth Areas connected through varying transportation alternatives
- Applies the recently adopted Pinal County Open Space and Trails Master Plan



Timeline

<i>February</i>	Alternatives Workshops
<i>March</i>	Work Group Meetings
<i>April</i>	Preferred Alternative Workshops
<i>May</i>	Comprehensive Plan Forum Series
<i>June/July</i>	60 Day Plan Review
<i>August/September</i>	Public Hearings
<i>Late Fall</i>	Plan Adoption

What's Next?

Alternative Public Workshops

Gold Canyon, Wednesday, February 20 6-8 pm
Best Western Gold Canyon Inn, Kachina Room

Casa Grande, Thursday, February 21 6-8 pm
Casa Grande Parks & Recreation Complex, Armadillo, Bobcat, and Coyote Rooms

San Tan/Queen Creek, Saturday, February 23 9-11 am
JO Combs Middle School (New Facility), Multipurpose Room

Maricopa, Tuesday, February 26 6-8 pm
Pima Butte Elementary School, Multipurpose Room

SaddleBrooke, Wednesday, February 27 6-8 pm
Desert View Performing Arts Theater

Kearny, Thursday, February 28 6-8 pm
Church of the Good Shepherd, Ray Hall

Thank you!

Contacts Us:

Jerry Stabley, Pinal County Project Manager
jerrold.stabley@co.pinal.az.us

Peggy Fiandaca, PSA
PSAinc@cox.net

Visit the Project Website Regularly!
www.PinalCountyPlan.com