



## Pinal County Comprehensive Plan

# Western Pinal County Association of Realtors

October 18, 2007



## Planning Process: What is the Comprehensive Plan?

- A statement of policy to guide decision-making
- A plan to anticipate & manage growth
- The determination of the appropriate role for Pinal County
- An implementation program

## Where are we in the process?

**Task 1: Project Initiation**

**Task 2: Framing Pinal County Comprehensive Plan Issues**

**Task 3: Pinal County Comprehensive Plan Compendium**

**Task 4: Setting the Vision**

**Task 5: Policy Framework**

**Task 6: Alternatives Development and Analysis**

**Task 7: Preferred Plan Alternative**

**Task 8: Draft Comprehensive Plan (60-Day Review Draft)**

**Task 9: Agency Review**

**Task 10: Implementation Plan**

**Task 11: Public Hearing Comprehensive Plan**

**Task 12: Produce Final Pinal County Comprehensive Plan**

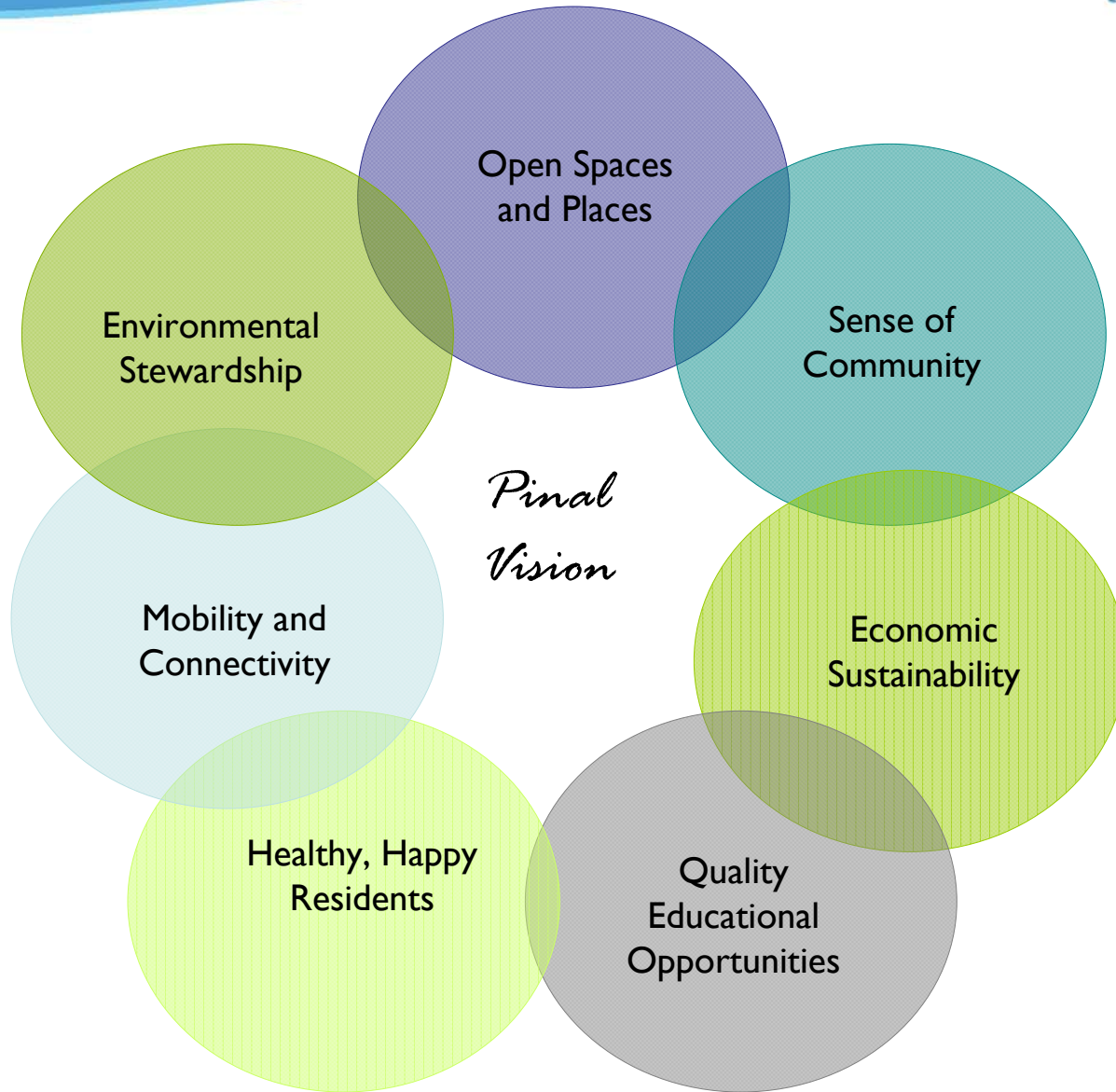
## Planning Process Input Structure

- Comprehensive Plan Advisory Group
- Technical Advisory Group
- Regional Planning Team
- Economic Development Task Force
- Transportation Task Force
- Stakeholder Organizations
- Public (Road Shows, Visioning Workshops and Design Charrettes; online input)

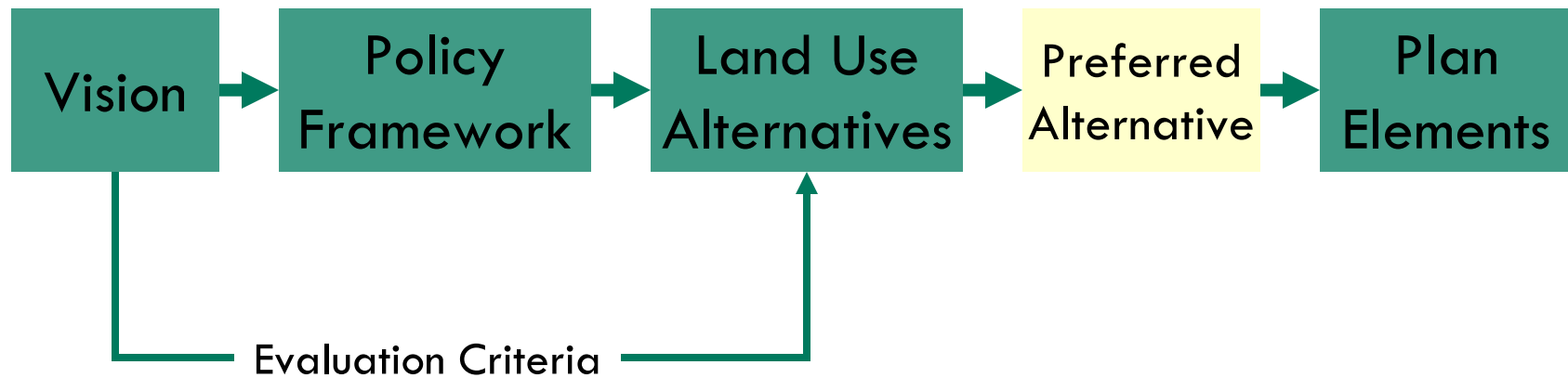


## How Did We Get Here?

- Data Collection and Analysis – Compendium
- Road Shows Held (July 2007)
- Visioning Workshops Held (August 2007)
- Development of Draft Vision
- Initial Policy Development



## Where does the Vision fit?





## October Design Charrette Purpose

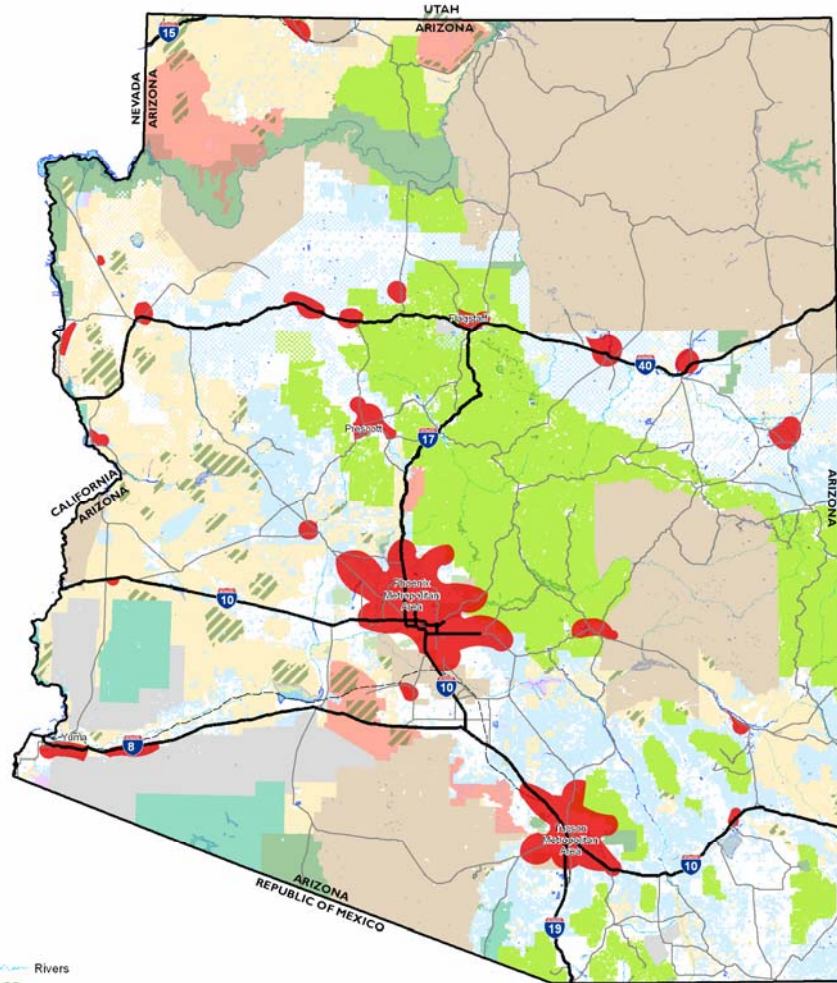
1. Develop future land use and transportation plans that illustrate the Pinal Vision.
2. Identify full range of land uses, roadways, activity center, parks & recreation, preservation areas, etc.
3. Description of how the Group's Plan addresses the Vision

## Planning Concepts to Think About

1. Growth will continue – Sun Corridor
2. Borderlands surrounding major metropolitan areas and Pinal governmental entities
3. Job creation and location of education and training facilities
4. Future Tribal development implications
5. Potential for area planning
6. Constitutional restrictions related to AZ State Land
7. Connectivity (new roadways, trails and transit options)
8. Potential for Pinal Regional Airport

# Pinal County Comprehensive Plan

*We Create Our Future*



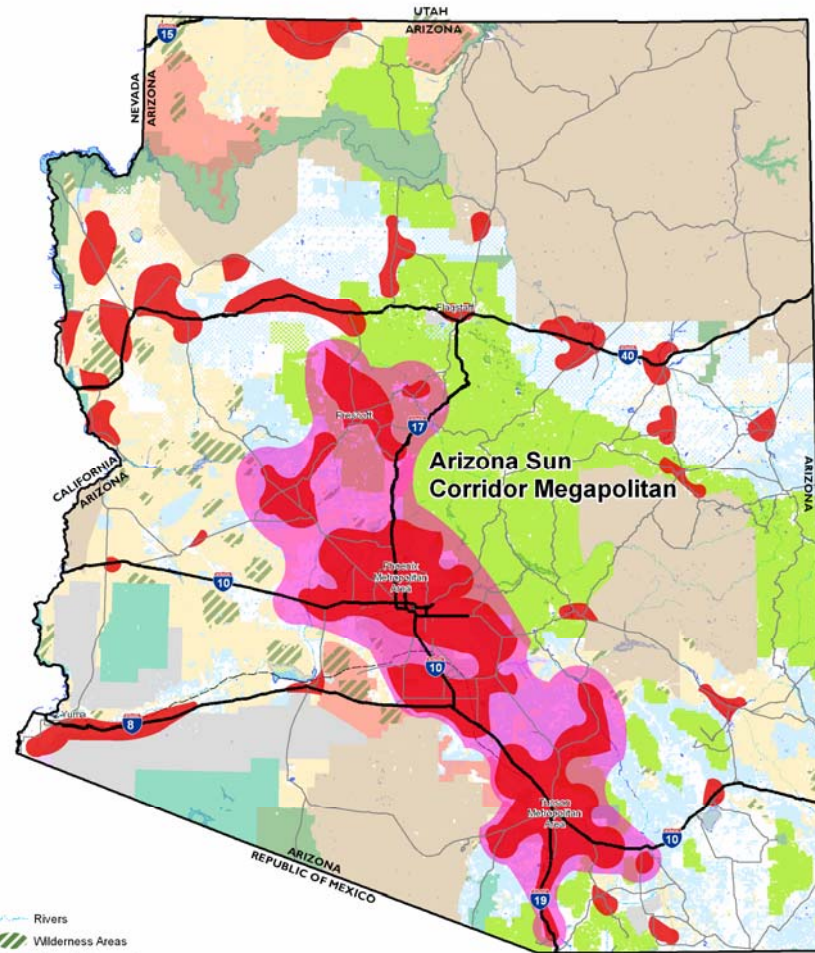
- |                               |                              |
|-------------------------------|------------------------------|
| Rivers                        | National Park Service        |
| Wilderness Areas              | Private                      |
| National Monuments            | State Land                   |
| Population/Employment Centers | State Wildlife Area          |
| <b>Land Ownership</b>         | US Forest Service            |
| Bureau of Land Management     | US Fish and Wildlife Service |
| Indian Communities            |                              |
| Local or State Parks          |                              |
| Military                      |                              |

## 2005 Population/ Employment Centers

Source: Maricopa Association of Governments,  
Long Range Transportation Plan 2050

# Pinal County Comprehensive Plan

*We Create Our Future*



- |                                  |                              |
|----------------------------------|------------------------------|
| Rivers                           | National Park Service        |
| Wilderness Areas                 | Private                      |
| National Monuments               | State Land                   |
| Population/Employment Centers    | State Wildlife Area          |
| Arizona Sun Corridor Megapolitan | US Forest Service            |
| <b>Land Ownership</b>            | US Fish and Wildlife Service |
| Bureau of Land Management        |                              |
| Indian Communities               |                              |
| Local or State Parks             |                              |
| Military                         |                              |

## 2050 Population/ Employment Centers

Source: Maricopa Association of Governments,  
Long Range Transportation Plan 2050

## Planning Assumptions/Realities

- Arizona will continue to grow
- CAAG projects potential build out of Pinal County at nearly 6 million people; 1.5 million in unincorporated areas
- 1.5 million people means 600,000 new households
- 600,000 new households need 780,000 jobs





## What Participants Planned

- High, medium and low density residential
- Mixed use centers
- Soft employment and industrial centers
- Potential airport location
- Potential I-10 bypass location
- High speed rail and rapid bus transit
- Services, such as: university(ies), hospitals, land fills, energy infrastructure, etc.





# Population and Employment



GROUP #1: JACKIE  
10/03/07





GROUP #2

### Land Use Gaming Map

- Legend**
- Railroads
  - Highways
  - Freeways
  - Regionally Significant Routes
  - State Roadway
  - Rivers
  - Wetlands/Streams
  - Topography (100 contours)
  - Municipal Planning Areas
  - Wilderness Areas
  - National Monuments
  - Superstation Vias
  - County Boundary
  - Land Ownership

- Corridor
  - South Corridor
  - Future Gateway Projects
  - Phoenix-Tucson I-10 Express Alternatives
- Projected Employment Centers**
- Future
  - Future and Existing Regional Parks
  - Existing
- Aviation Facilities**
- Primary Airport
  - Secondary Airport
  - Military Airport
  - Heliport
  - Other Airport



© PINAL COUNTY AGIST 2007





## What's Next?

- Using Charrette information to produce alternatives and draft policies
- Evaluate Draft Vision
- Youth engagement
- Public involvement activities in 2008

*Get our eNewsletter by providing me your business card!*

## Thank you!

### **Contacts Us:**

Jerry Stabley, Pinal County Project Manager  
[jerrold.stabley@co.pinal.az.us](mailto:jerrold.stabley@co.pinal.az.us)

Peggy Fiandaca, PSA  
[PSAinc@cox.net](mailto:PSAinc@cox.net)

Visit the Project Website Regularly!  
[www.PinalCountyPlan.com](http://www.PinalCountyPlan.com)